

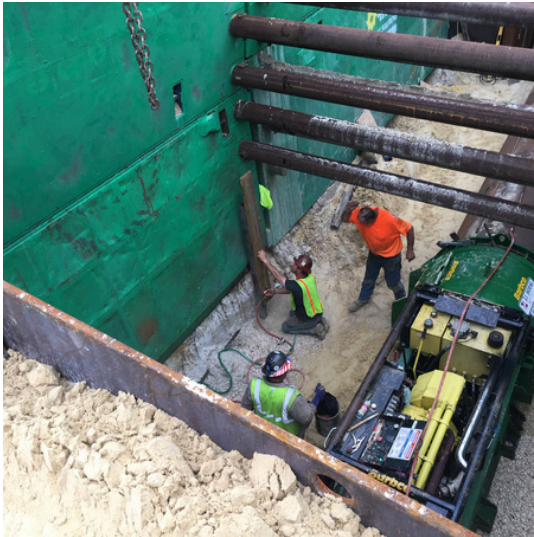


VIA CONSULTING SERVICES, INC.

VIA CONSULTING SERVICES, INC.

ATLANTIS DRIVE ROADWAY IMPROVEMENTS

CONTRACT NO.:
2020-2021-66



PROJECT DESCRIPTION

This \$3.4M new 4-lane roadway from Challenger Drive east for approximately 1/2 mile ending in a cul-de-sac. This roadway project is intended to serve future industrial and residential development in the corridor and consisted of 5000 CY of subsoil excavation, 24000 CY of the embankment, lime rock base, 3000 tons of asphalt, 3800 LF of drainage, curb, sidewalk, traffic separator, signage, signals, street lighting, pavement marking, 3000 LF of 8" and 10" PVC Sanitary, 2500 LF of 8" and 10" force main, 2800LF of 10" and 12" reclaim force main, 3000 LF of potable water main including a submersible lift station and a stormwater facility.

CLAY COUNTY

Clay County

STEPHEN KOTERAS, SR. PROJECT MANAGER

(904) 269-6301, stephen.koteras@claycounty.gov